

# IAABO Board #20

## 2015 Referee Class

Throw Ins and AP Arrow



**OUT OF BOUNDS  
(REVIEW)**

A player is out of bounds when he/she touches the floor on or outside the boundary line.



A player is out of bounds when he/she touches the floor on or outside the boundary line.



A player is out of bounds when he/she touches the floor on or outside the boundary line.



A player is out of bounds when he/she **touches** the floor or **anything other than a player/person**, on or outside the boundary line.



A player is out of bounds when he/she **touches** the floor or **anything other than a player/person**, on or outside the boundary line.





Is the player for Red out of bounds?  
Is the player for Blue out of bounds?





If the player in white is touching the fan with his foot, is the player out of bounds?



The ball is out of bounds when it is touched by:  
a player out of bounds



The ball is out of bounds when it is touched by:



any person  
outside the  
boundary



the floor  
outside the boundary



any object  
on or outside the  
boundary

## 7-3 Simultaneous Out of Bounds



2 players simultaneously cause the ball to be out of bounds or the official is unsure of who cause the ball to go out.

**Play resumes by use of the A.P. arrow**



## 7-3 Simultaneous Out of Bounds

If the A.P. Arrow has not been established.

Play shall resume with a jump ball in the center restraining circle with the two players involved.



**AWARDING THE BALL**



7-4 Ball is awarded out of bounds after a  
**violation.**



7-4 Ball is awarded out of bounds after a **free throw** for a **technical** or **intentional** foul.



7-4 Ball is awarded out of bounds after the ball becomes **dead** while a team is in control.



Head coach of the Palmetto Ridge Bears, reacts to an "inadvertent whistle" from one of the referees.

7-4 Ball is awarded out of bounds after a **player control** or **team control** foul.





7-4 Ball is awarded out of bounds after a **common foul** before the bonus rule is in effect.



PUSH



ILLEGAL USE

7-4 Ball is awarded out of bounds after a **held** ball.





**THROW-IN**

# 4-42 Thrower, Throw In,

**A thrower** is a player who attempts to make a throw in.

**A throw in** is the method of putting the ball in play from out of bounds.



A ball is at the disposal of a player when it is:  
**handed to** by a thrower or a free thrower



Not at disposal



At disposal

A ball is at the disposal of a player when it is:  
**caught by a player** after it is bounced to him/her



She does **not quite** have disposal yet.

She must have control.



A ball is at the disposal of a player when it is:  
**placed on the floor** at the spot



A ball is at the disposal of a player when it is:  
**available** to a player after a goal





# 4-42 Throw In Ends

The throw in ends when:

- The passed ball touches or is **LEGALLY** touched by **another player inbounds**
- The passed ball touches or is touched by **another player out of bounds** EXCEPT after a goal or an awarded basket
- The throw in team commits a throw in violation

# 4-42 Throw In Counts



The throw in count BEGINS when the **ball is at the disposal** of the player.



The throw in count ENDS when the **ball is released by the thrower** so it goes directly onto the court.

# 9-2 Throw In Provisions

The thrower **shall not leave the throw in spot** until the ball is released on a throw in pass.



# 9-2 Throw In Provisions

The ball **shall be passed directly** onto the court so it is touched by another player on the court before going out of bounds untouched.

The throw in **cannot be touched** by a teammate outside the boundary line except as in 7-5-7 (after a made or awarded goal)





# 9-2 Throw In Provisions



The thrower **has 5 seconds** to release the ball directly onto the court.



The thrower **shall not carry the ball** onto the court

# 9-2 Throw In Provisions

The thrower **shall not touch the ball on the court** until it touches or is touched by another player.





# 9-2 Throw In Provisions

The throw in **shall not enter the basket** before it touches or is touched by another player.



# 9-2 Throw In Provisions

The thrown ball **shall not**:

become lodged between  
the ring and the backboard

or

come to rest on the flange



**until** it touches or is touched by another player.

## 9-2 Throw In Provisions

- The thrower **shall not be replaced by a teammate** after he/she has disposal (except 7-5-7)
- No teammate of the thrower **shall be out of bounds** after a designated spot throw in begins.
- **Penalty:** Ball becomes dead when violation occurs and ball is given to opponent for a throw in nearest the spot of the violation.

# 9-2 Throw In Provisions

The opponent of the thrower in **can not break the plane of the boundary line** until the ball is released on a throw in pass.



## Penalty:

The first violation is a warning for delay.  
The second warning for delay is a technical foul.



# 9-2 Throw In Provisions

If an opponent of the thrower reaches through the boundary plane and **touches the ball**

**A technical foul** will be charged to the offender

A delay warning will also be assessed.





# 9-2 Throw In Provisions

If an opponent of the thrower reaches through the boundary plane and **fouls the thrower**,

**an intentional foul** will be charged to the offender

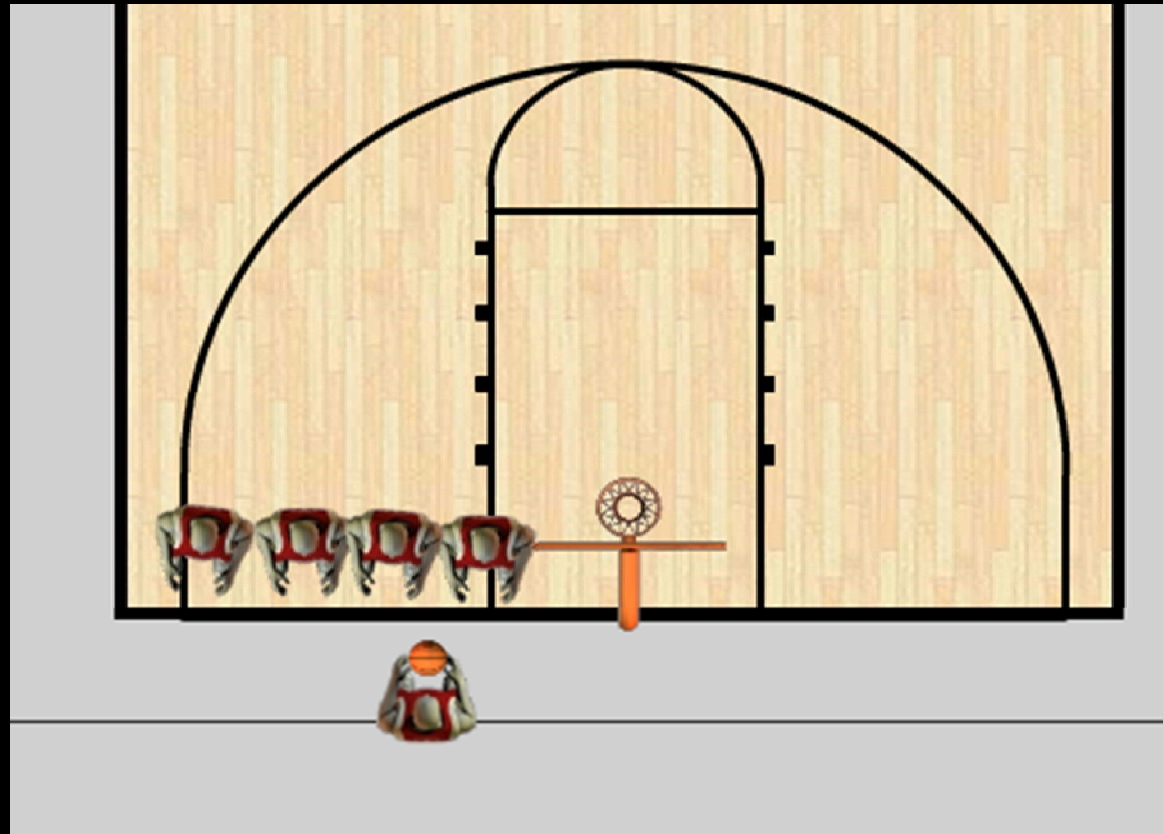
A delay warning will also be assessed.



# Throw-in

Teammates shall NOT occupy:

**adjacent positions** which are **parallel** to and **within 3 feet** of the **boundary line** if an opponent desires one of the positions.



# 9-2 Throw In Provisions- Note

The thrower may penetrate the boundary line plane provided:

He/she does NOT touch the **inbounds area** or a **player inbounds** before the ball is released on a throw-in pass.



# Resuming Play Procedure (Throw-in)

## After **Time-out** or **Intermission**

1. **Team A** has the throw in- if they delay for 5 seconds. - **Violation**
2. **Team B** has the throw in- if they delay 5 seconds. – **Violation**
3. If either team is still not ready to play-  
**Technical Foul**



# Designated Spots



# 4-42 Designated Spot

The designated throw in spot is **3 feet wide** with no depth limitation.

The thrower must keep **one foot on or over the spot** until the ball is released.

Pivot foot restrictions and the **travel rule** are not in effect during a throw in.



Designated spot throw is **nearest the spot**  
of where the **violation** happened





Designated spot throw-in is nearest **where the ball became dead.**



This occurs when we resume play from the **Point of Interruption**, such as:

- after a double personal foul,
- double technical foul,
- simultaneous foul



# Designated spot throw-in nearest the spot of the foul



After a player control  
or  
team control foul

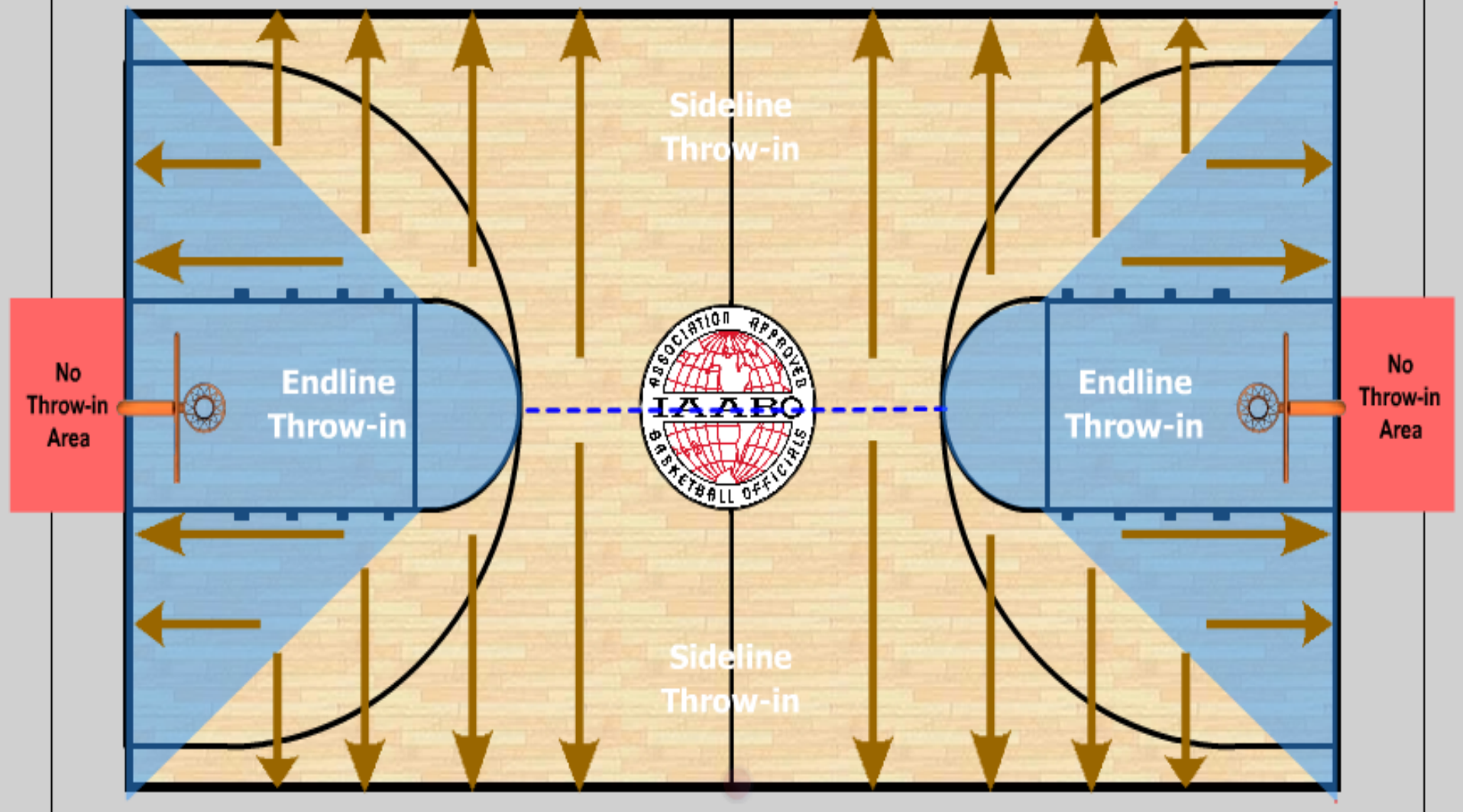


After any common foul



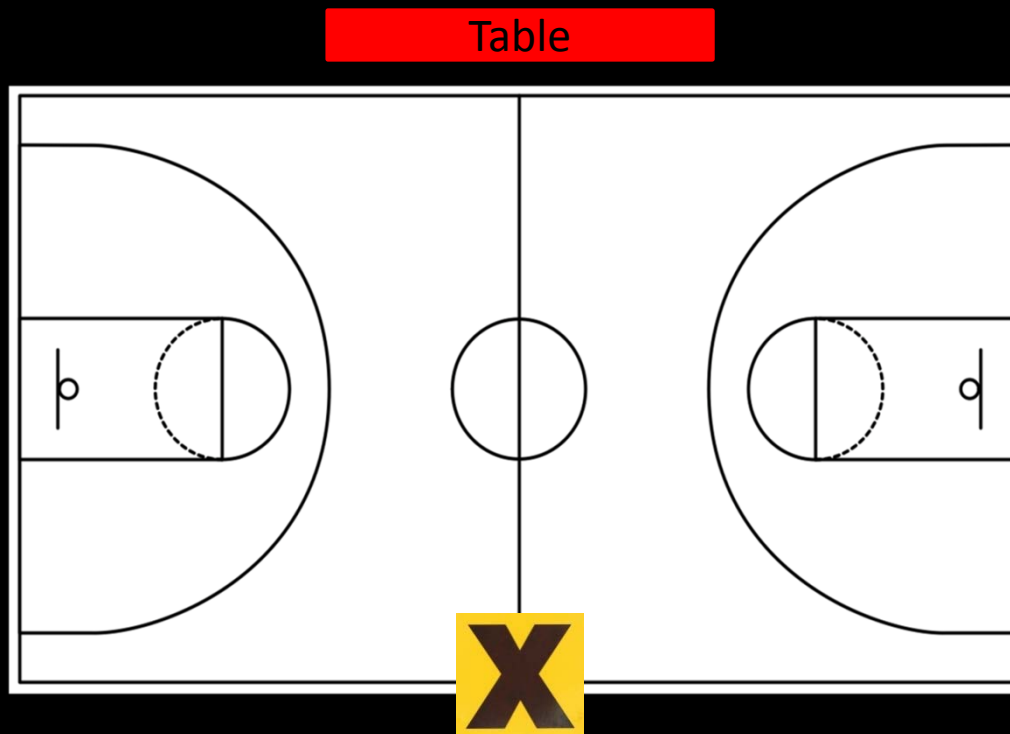
After an intentional  
or  
flagrant personal foul

# Where is the closest spot?



Designated spot **throw-in** at the **division line**  
opposite the scorers table

- **After a technical foul.**
- An **A.P. throw in** to start the 2<sup>nd</sup>, 3<sup>rd</sup>, and 4<sup>th</sup> quarters.





# 7-5 Throw In Scored or Awarded Goal

A throw in can be **anywhere along the end line** after a goal or an awarded goal.





## 7-5 Throw In after Scored or Awarded Goal

A team **retains this privilege** if the scoring team commits a violation or common foul (before the throw in ends and before the bonus is in effect) and the ensuing throw in spot would be on the end line.

# Retaining the Endline Privilege

- Team A scores a field goal.
- B-1 picks up the ball after the made basket, then proceeds out of bounds to start the throw in process.
- B-1 moves along the endline out of bounds while attempting to find an open teammate for the throw in.
- Immediately after B-1 releases the throw in pass, the ball is kicked by A-2 over the endline.
- Team B will be awarded a throw in and retain the right to run the end line on the ensuing throw in.

**WARNINGS FOR DELAY**

# 4-47 Warning for Delay

There are 4 delay warnings

– Breaking the plane of the boundary line



A warning for delay is recorded in the book by the scorer and reported to the coach.



# 4-47 Warning for Delay

There are 4 delay warnings

- Huddling in the lane prior to a free throw or contact with a free thrower



A warning for delay is recorded in the book by the scorer and reported to the coach.

# 4-47 Warning for Delay

There are 4 delay warnings

– Interfering with the ball after a goal



A warning for delay is recorded in the book by the scorer and reported to the coach.

# 4-47 Warning for Delay

There are 4 delay warnings

-Failure to have the court ready to play after a time out.



A warning for delay is recorded in the book by the scorer and reported to the coach.

# 4-47 Warning for Delay

One warning for all 4 delays

The second delay of any kind is a  
**TEAM technical foul.**



# Alternating Possession Throw Ins



The team obtaining control from the jump ball establishes the **AP procedure** and the arrow is set towards the opponent's basket



Control may also be established by the results of a violation or foul

To start the 2<sup>nd</sup>, 3<sup>rd</sup> and 4<sup>th</sup> quarters, the throw in will be an AP throw in.





# 6-4 AP Throw Ins

AP throw-ins shall be from the out of bounds spot nearest to where the ball is located.





# 6-4 AP Throw Ins

Alternating Possession throw in shall result when:

A **held ball** occurs



# 6-4 AP Throw Ins

Alternating Possession throw in shall result when:  
The ball goes out of bounds and is:



last touched  
simultaneously by two  
opponents



If the **official is in doubt**  
as to who last touched it



If the **officials disagree**  
who last touched it



# 6-4 AP Throw Ins

Alternating Possession throw in shall result when:



Simultaneous floor or free throw violations occur



A live ball lodges between backboard and ring



A live ball comes to rest on the flange,

UNLESS a free throw or throw in follows

# 6-4 AP Throw Ins

Alternating Possession throw in shall result when:

The ball becomes dead when **neither team is in control** and no goal, infraction nor end of quarter/extra period is involved





# 6-4 AP Throw Ins

Alternating Possession throw in shall result when:

Opponents commit  
**simultaneous** goal tending or  
basket interference violations



# 6-4 AP Throw Ins

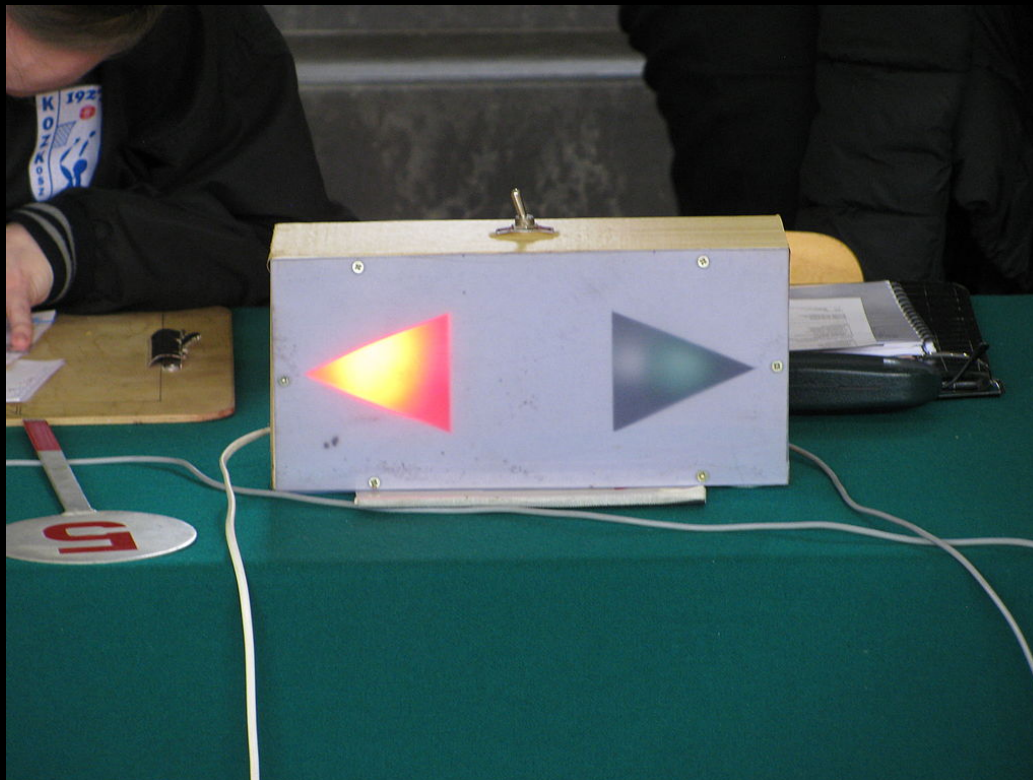
Alternating Possession throw in shall result when:

- Double personal,
- Double technical, or
- Simultaneous fouls occur

and **neither team** is in control and no goal infraction, nor end of the quarter/ extra period is involved.

# 6-4 AP Throw Ins

The direction of the possession arrow is **reversed immediately** after an AP **throw-in ends**.



# 6-4 AP Throw Ins

An AP throw-in ends when the throw-in ends.



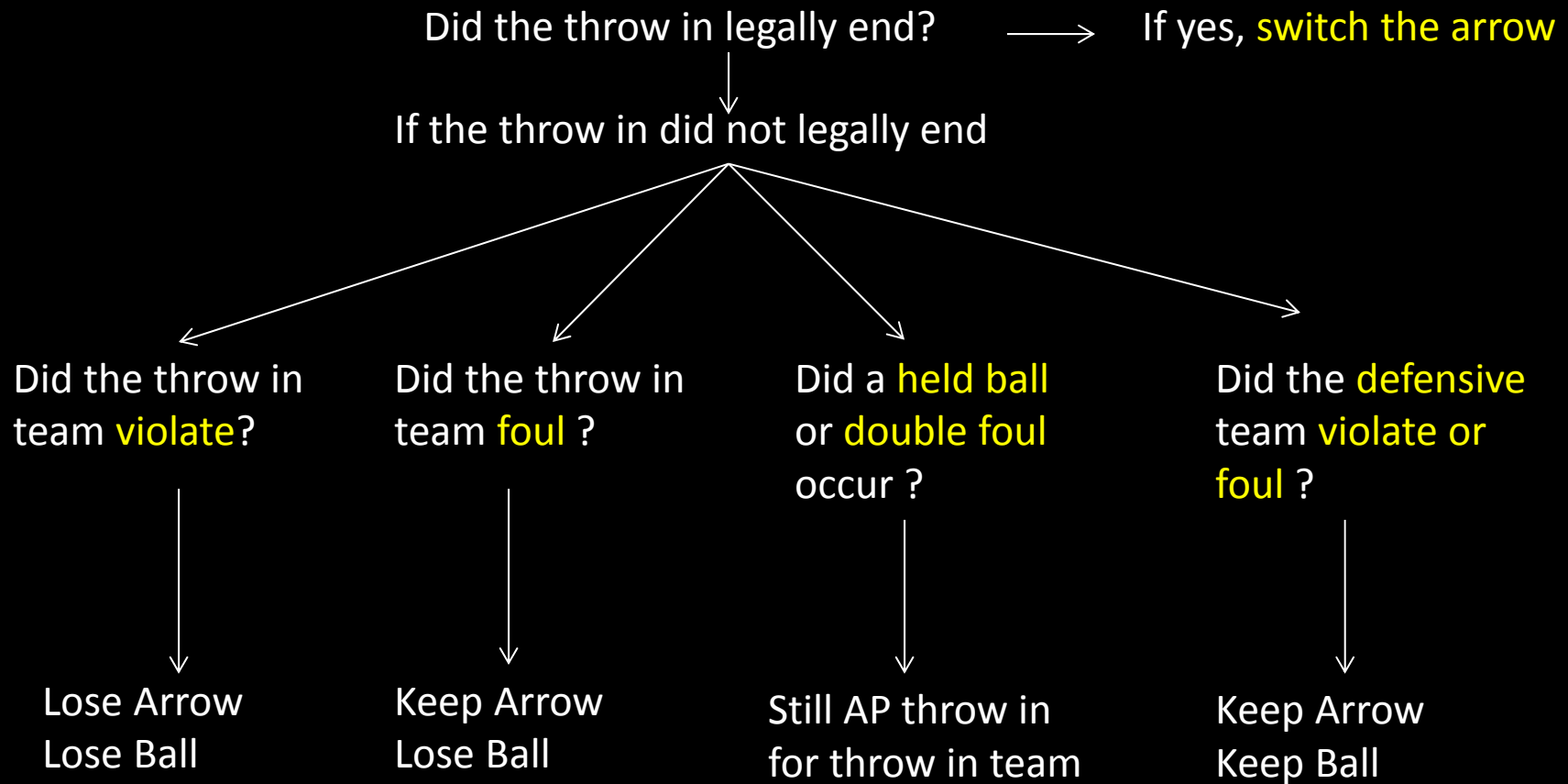
When does a throw in end?

When the ball touches or is LEGALLY touched by another player inbounds





# AP Throw in Situations



# Play Situation #1

A-1 and B-1 simultaneously bat the ball out of bounds.

Will this be an AP throw in?

**YES**

## Play Situation #2

A-1 and B-1 catch a pass at the same time and neither can pull the ball away. A held ball is ruled.

Will this be an AP throw in?

**YES**

# Play Situation #3

A-1 attempts a try for goal and the ball lodges between the backboard and ring?

Will this be an AP throw in?

**YES**



# Play Situation #4

A-1 attempts the first of two free throws and the ball lodges between the backboard and ring?

Will this be an AP throw in?

**NO**

## Play Situation #5

A-1 and B-1 commit a double foul after the unsuccessful try for goal by B-2 has been released.

Will this be an AP throw in?

**YES**

# Play Situation #6

During an alternating possession procedure throw in, A-1's throw in is intentionally kicked by B-1.

- Did the throw in end? **No**
- Who caused the violation? **B-1**
- Will this still be an AP Throw-in? **Yes**
- Does the AP arrow switch? **No**

# Play Situation #7

During an AP throw in by A-1, the ball is touched by B-1 who has a foot on the boundary line.

- Did the throw in end? **Yes (7-6-2)**
- Who caused the violation? **B-1**
- Will this still be an AP Throw-in? **No**
- Does the AP arrow switch? **Yes**



## Play Situation #8

During an alternating possession procedure throw in, Thrower-in A-1 breaks the plane of the boundary line with the ball. B-1 grasps the ball and neither player can get the ball from the other.

- Did the throw in end? **No**
- Will this still be an AP Throw-in? **Yes**
- Does the AP arrow switch? **No**

# Play Situation #9

During an alternating possession procedure throw in, A-1's throw in is batted over the end line by B-1.

- Did the throw in end? **Yes**
- Who caused the violation? **B-1**
- Will this still be an AP Throw-in? **No**
- Does the AP arrow switch? **Yes**

# Play Situation #10

During an alternating possession procedure throw in, A-1 releases the ball. Before the ball is touched inbounds, B-2 fouls A-2. Team A is not in the bonus.

- Did the throw in end? **No**
- Who fouled? **B-2**
- Will this still be an AP Throw-in? **No**
- Does the AP arrow switch? **No**

# Play Situation #11

During an alternating possession procedure throw in, Thrower A-1 steps onto the court before releasing the ball on the throw in. The official rules a violation on Team A.

- Did the throw in end? **Yes**
- Who caused the violation? **A-1**
- Will this still be an AP Throw-in? **No**
- Does the AP arrow switch? **Yes**



# Summary of AP Throw Ins

- **Lose arrow** on violations of team with the arrow
- **Keep arrow** on fouls
- **Keep arrow** on a kick, (not legally touched)
- **Keep arrow** if opponent commits violations

# THE END

