

IAABO Board #20

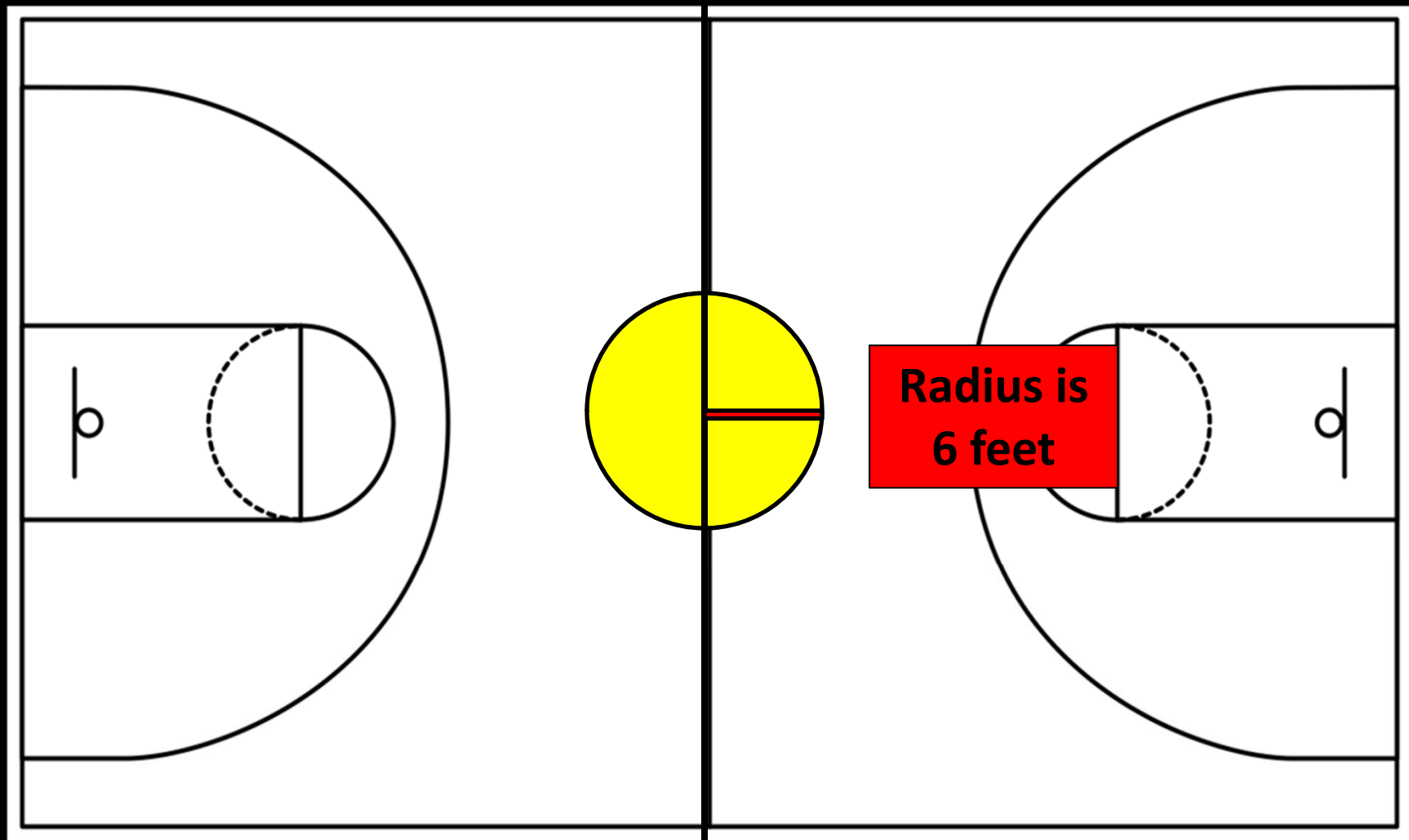
2015 Referee Class

Court and Equipment

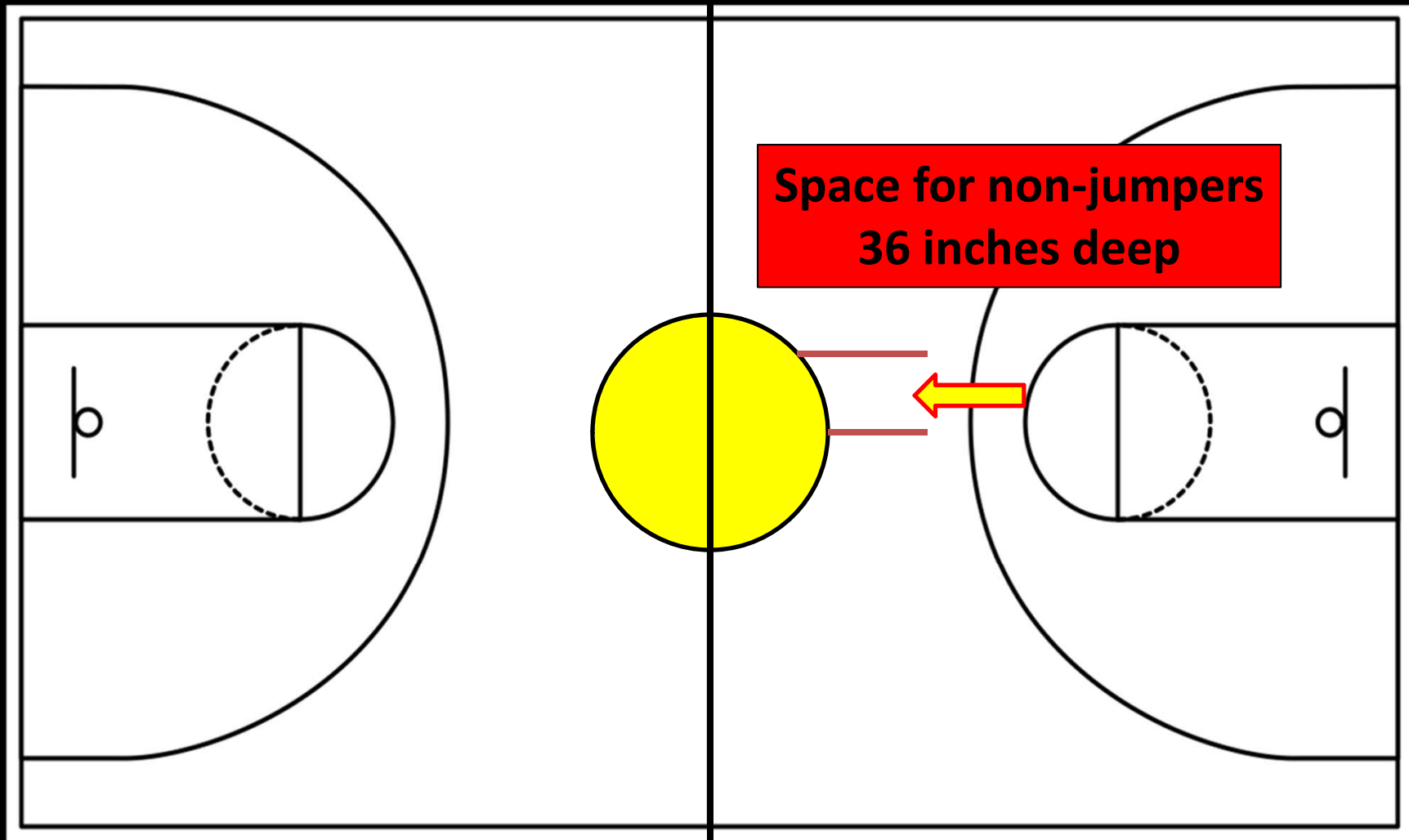


THE COURT

Jump Circle

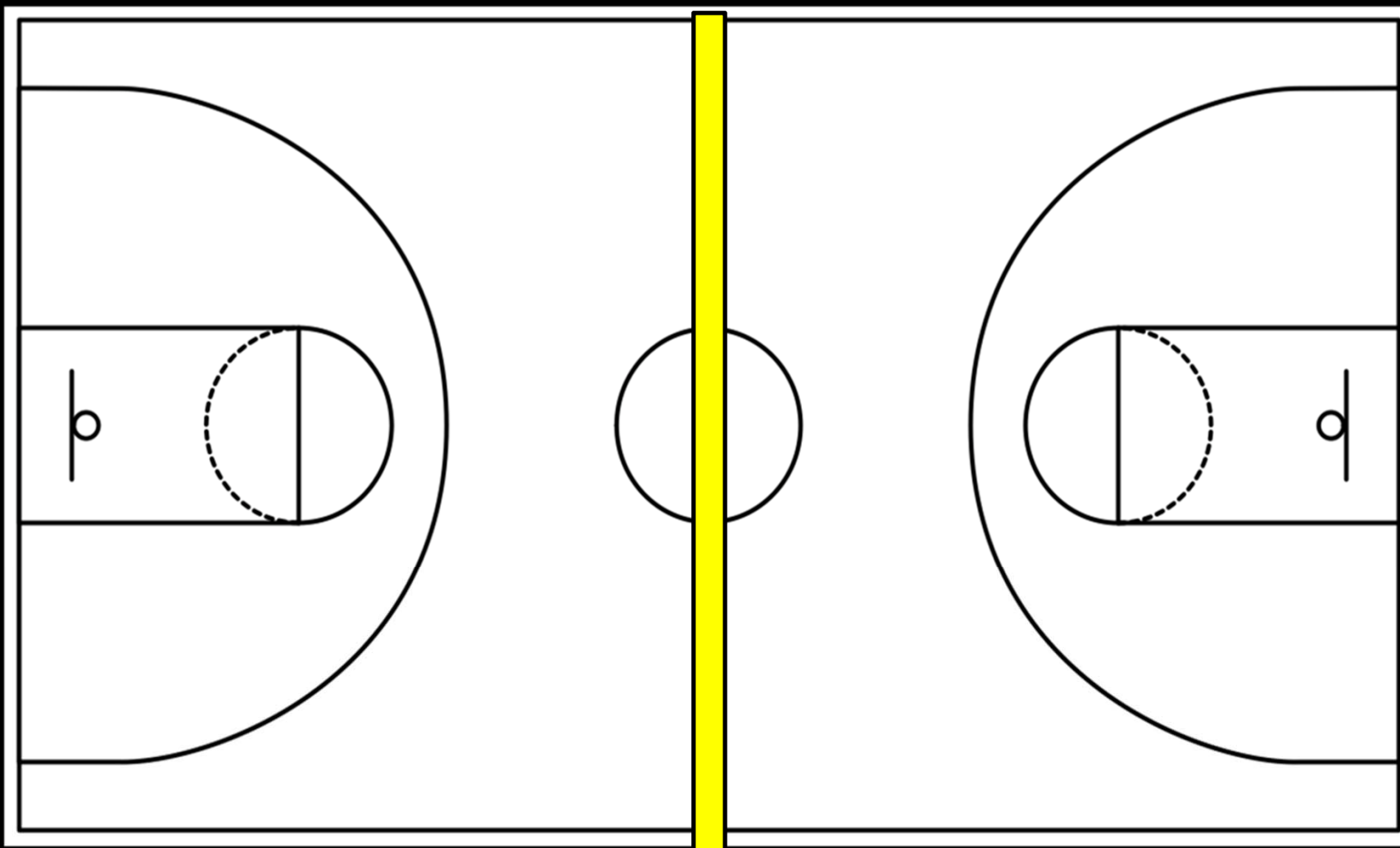


Jump Circle

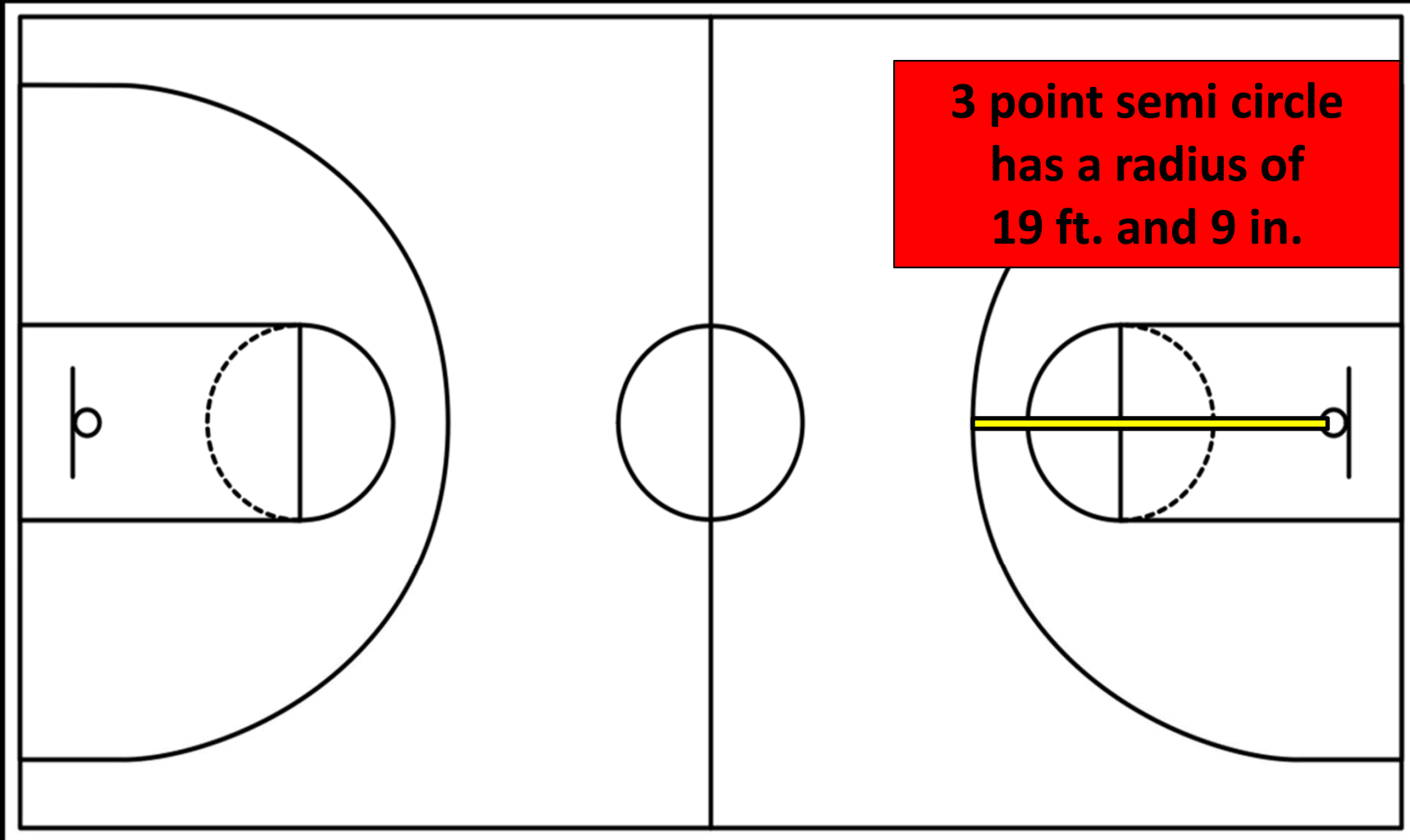


Division line is 2 in. wide,
shall divide the court into two equal parts.

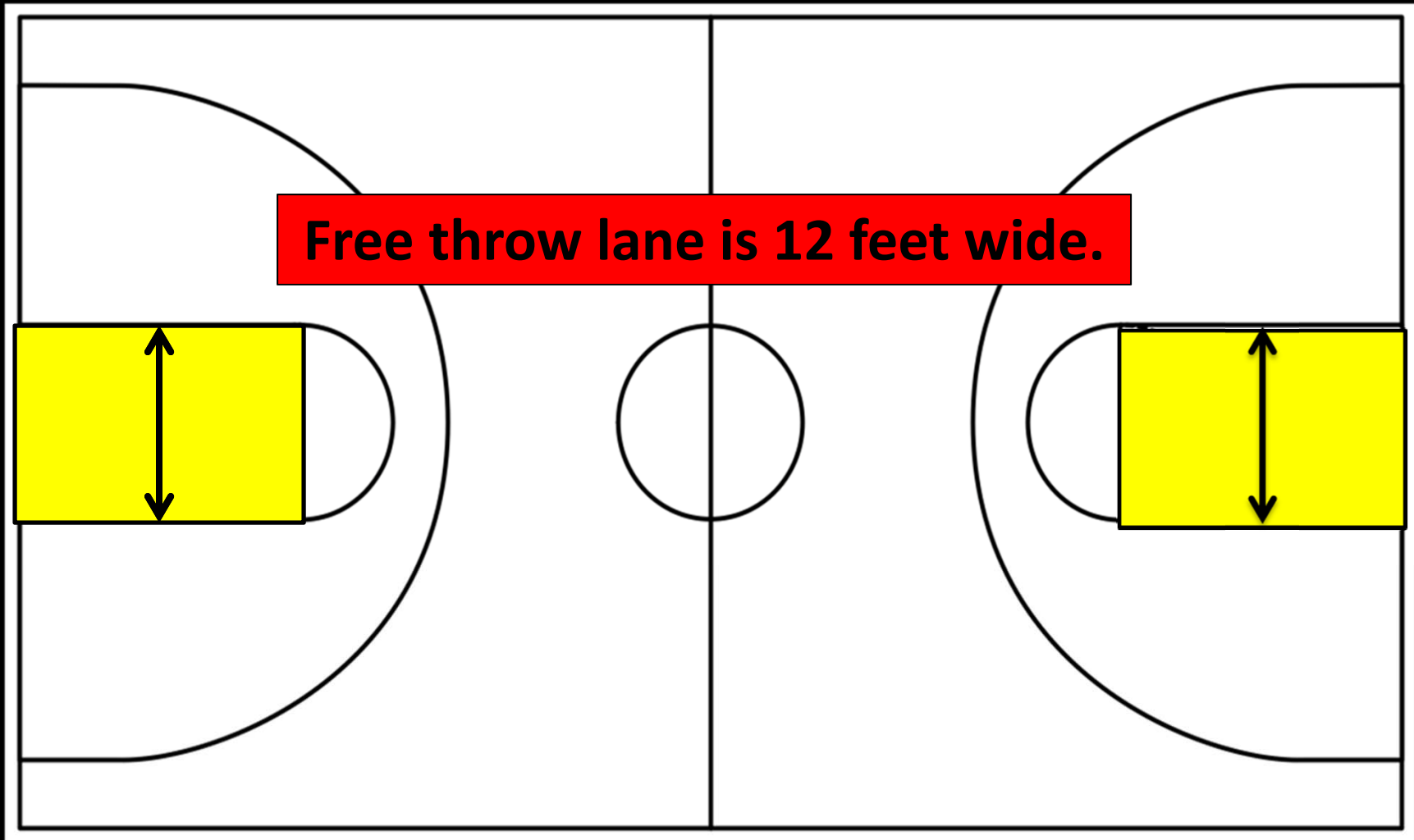
The division line is part of backcourt



3 Point Line

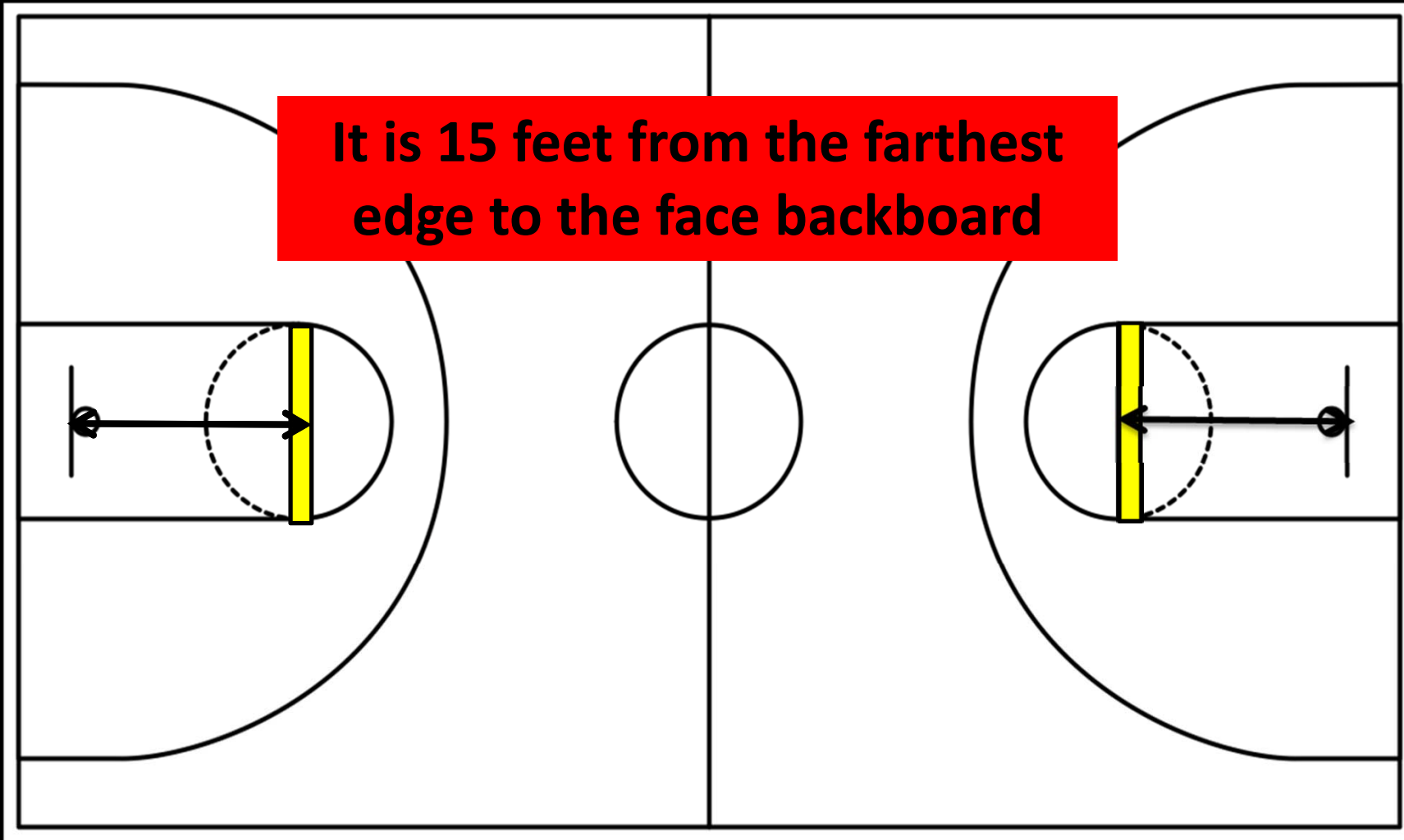


All lines designating the free-throw lane, but not lane-space marks and neutral zone marks are part of the lane.

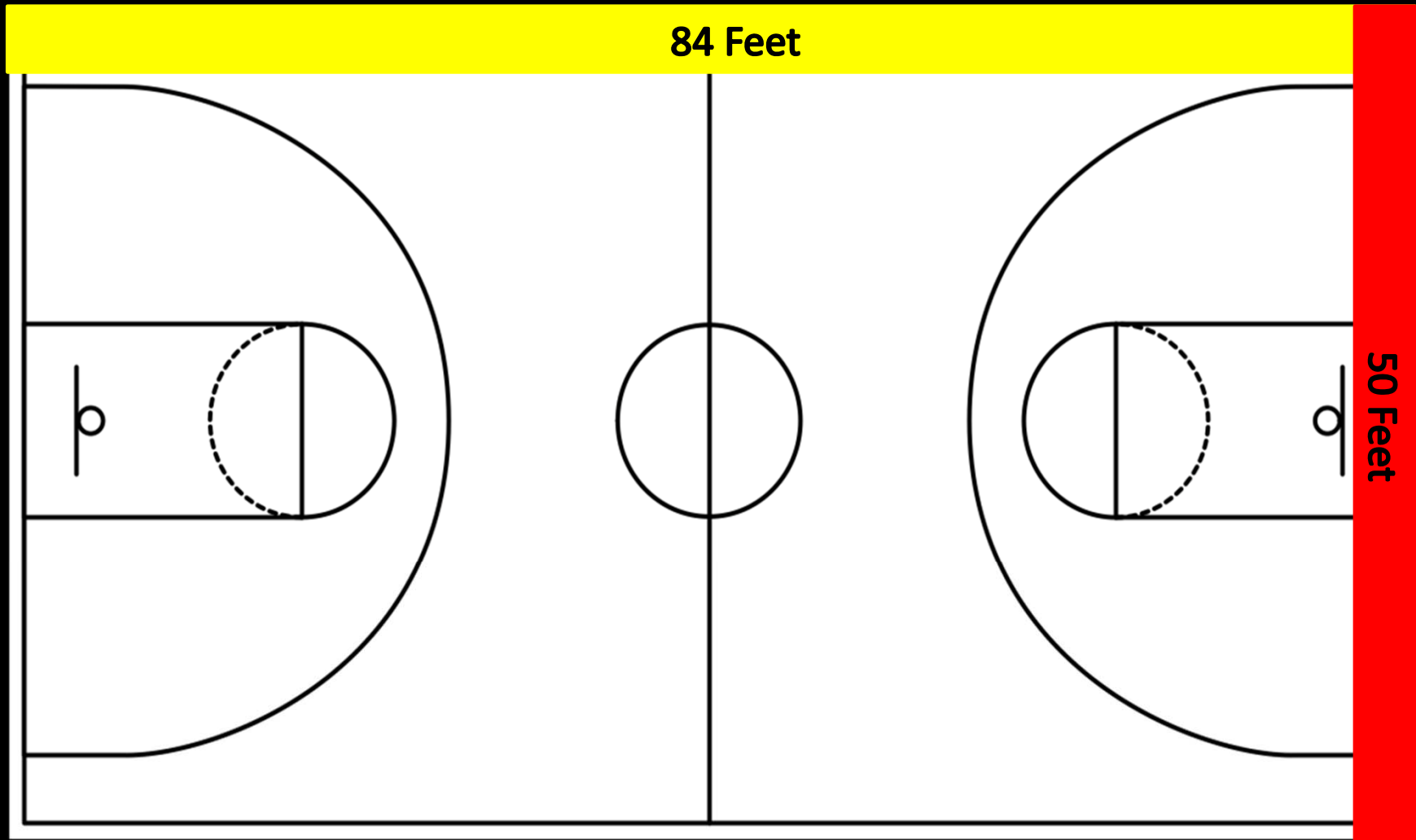


Free Throw Line

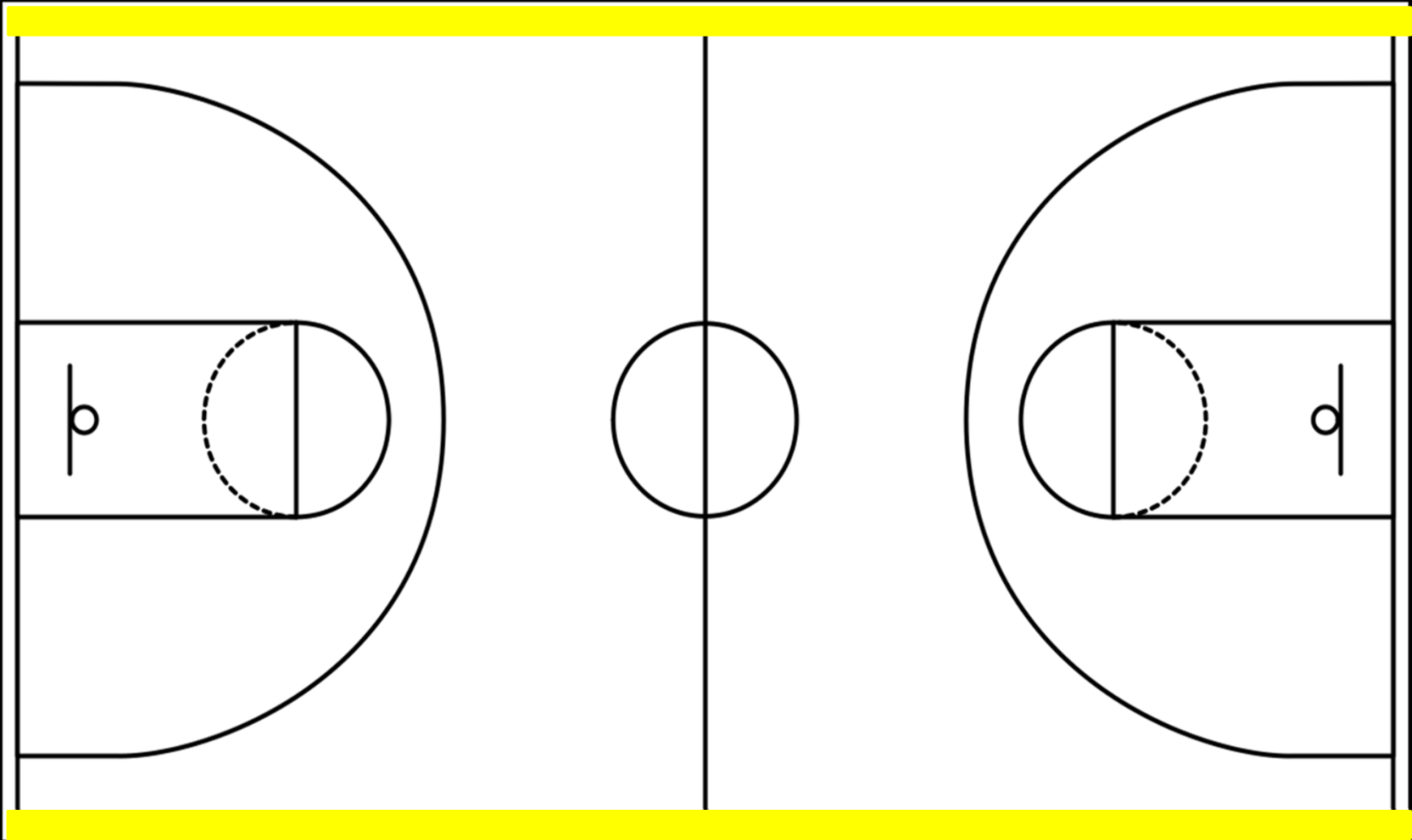
It is 15 feet from the farthest edge to the face backboard



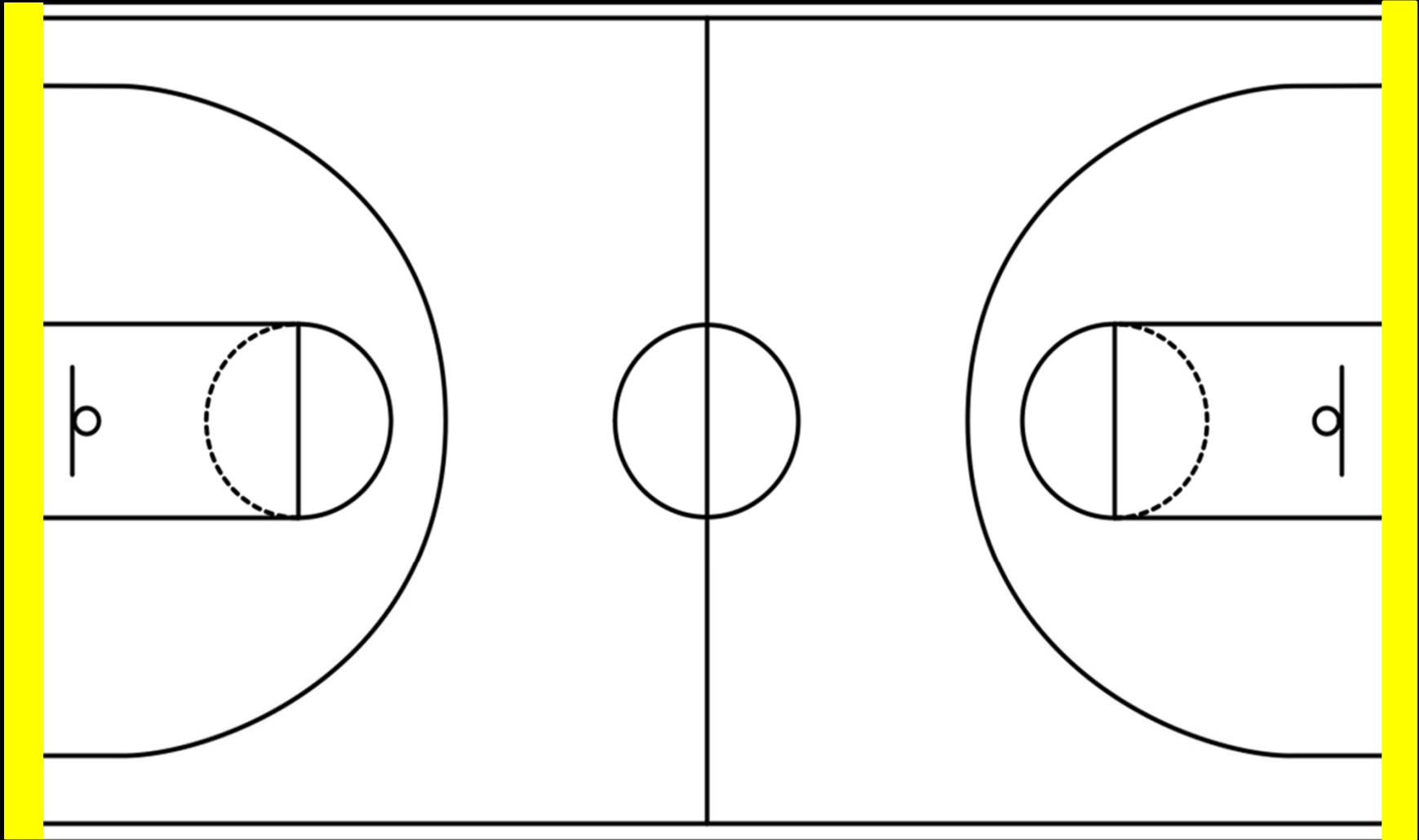
High school playing court is 84 X 50 feet,
cannot be greater than 95 x 50 feet.



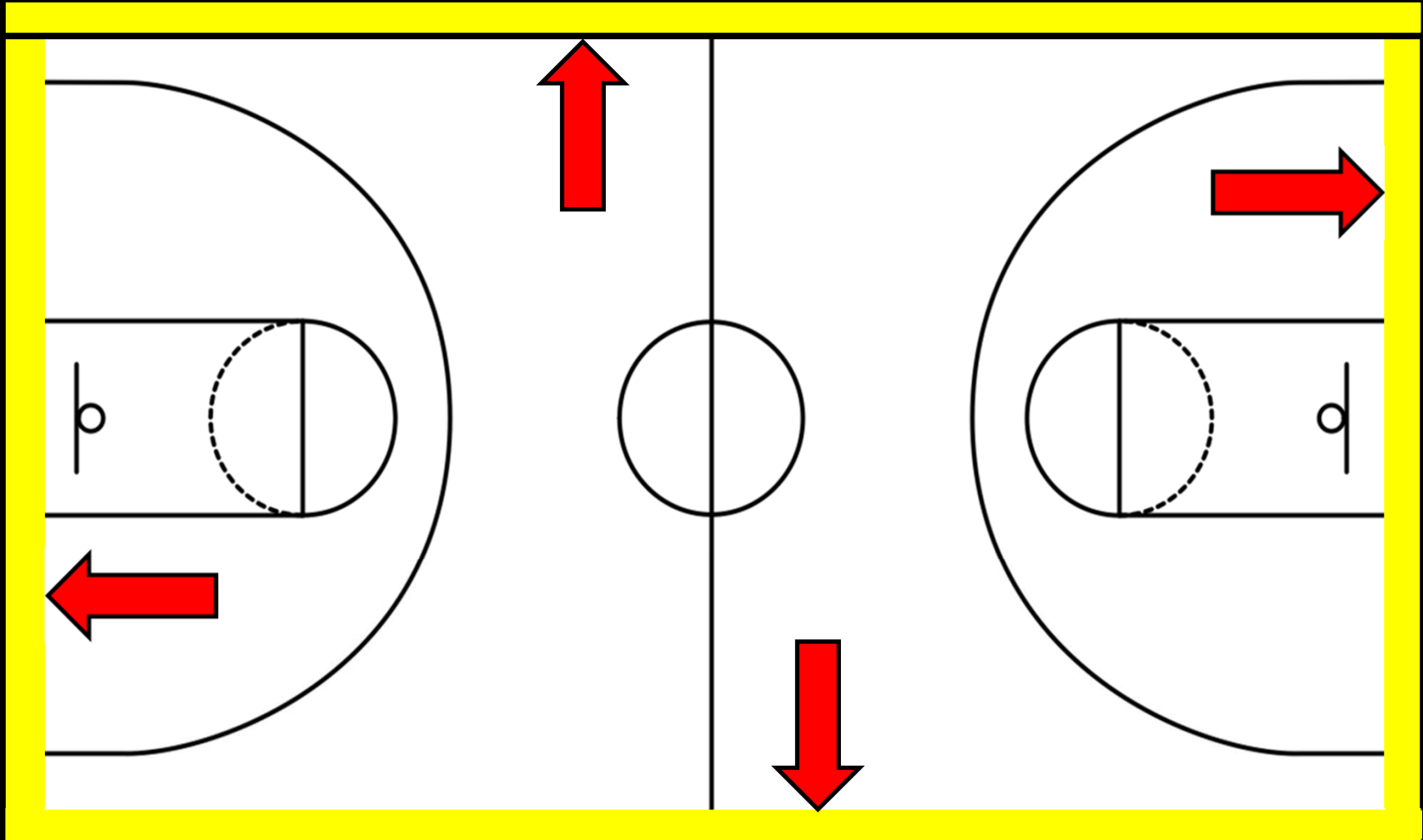
Boundary lines consist of sidelines



Boundary lines consist of sidelines and endlines

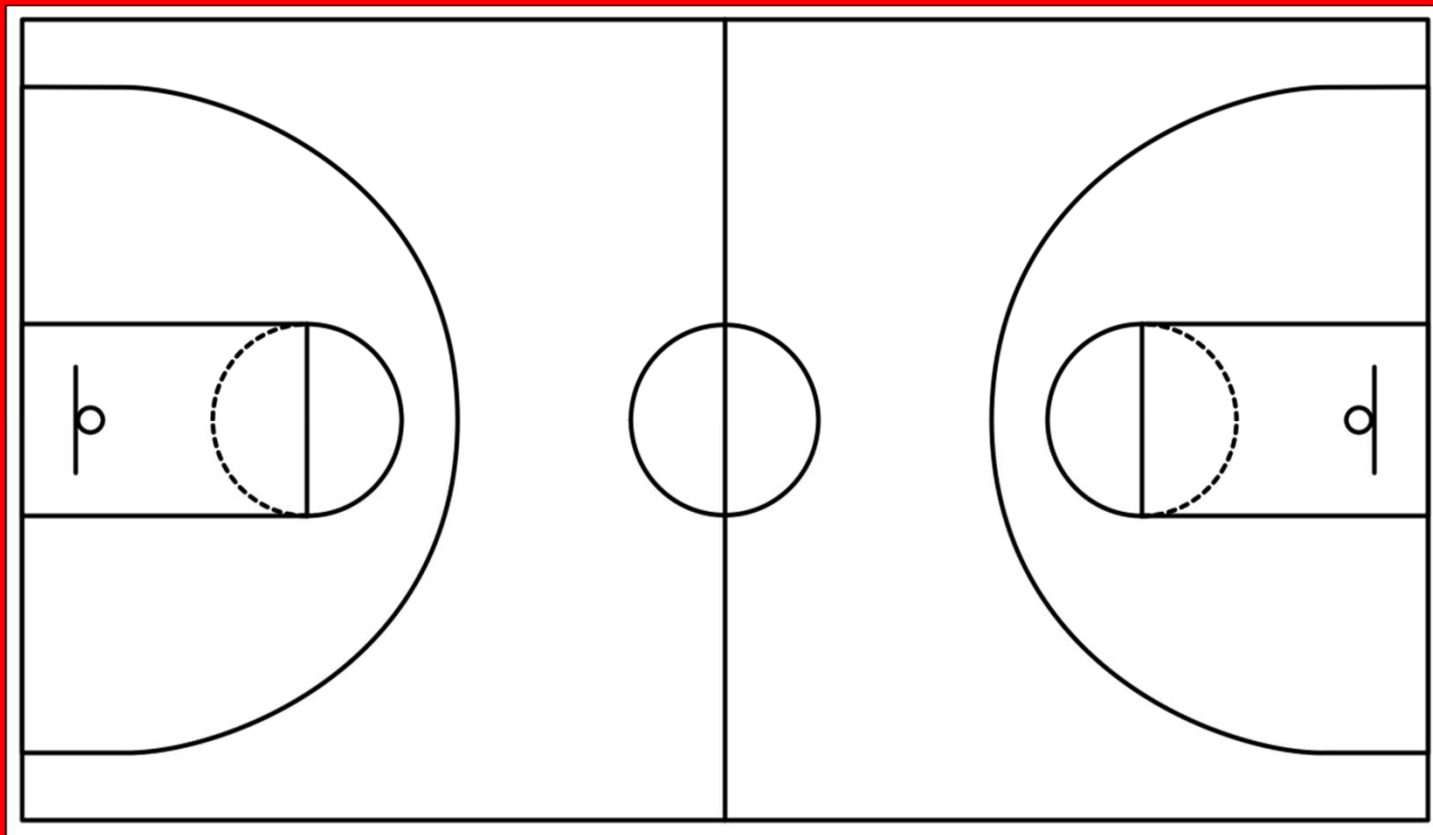


The **inside edges** of these lines defines the inbounds and out-of-bounds areas.

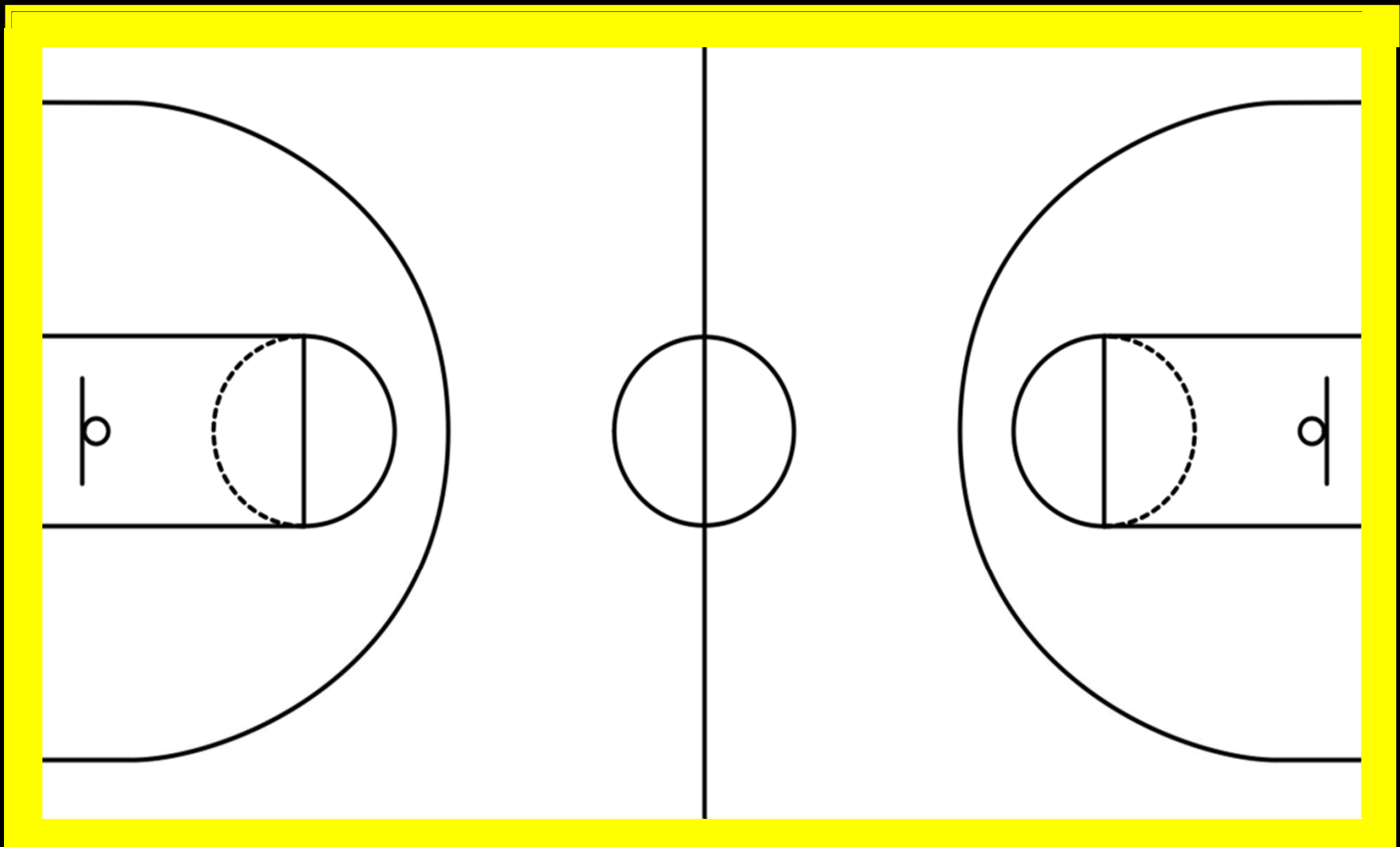


There shall be at least 3 feet (and preferably 10 feet) of unobstructed space outside boundaries.

3 feet outside the boundary



Side lines and end lines are 2 inches in width



OUT OF BOUNDS

A player is out of bounds when he/she touches the floor on or outside the boundary line.



A player is out of bounds when he/she touches the floor on or outside the boundary line.



A player is out of bounds when he/she touches the floor on or outside the boundary line.



A player is out of bounds when he/she **touches** the floor or **anything other than a player/person**, on or outside the boundary line.



A player is out of bounds when he/she **touches** the floor or **anything other than a player/person**, on or outside the boundary line.



Is the player for Red out of bounds?
Is the player for Blue out of bounds?



If the player in white is touching the fan with his foot, is the player out of bounds?



The ball is out of bounds when it is touched by:
a player out of bounds



The ball is out of bounds when it is touched by:



any person
outside the
boundary



the floor
outside the boundary



any object
on or outside the
boundary

7-3 Simultaneous Out of Bounds



2 players simultaneously cause the ball to be out of bounds or the official is unsure of who cause the ball to go out.

Play resumes by use of the A.P. arrow

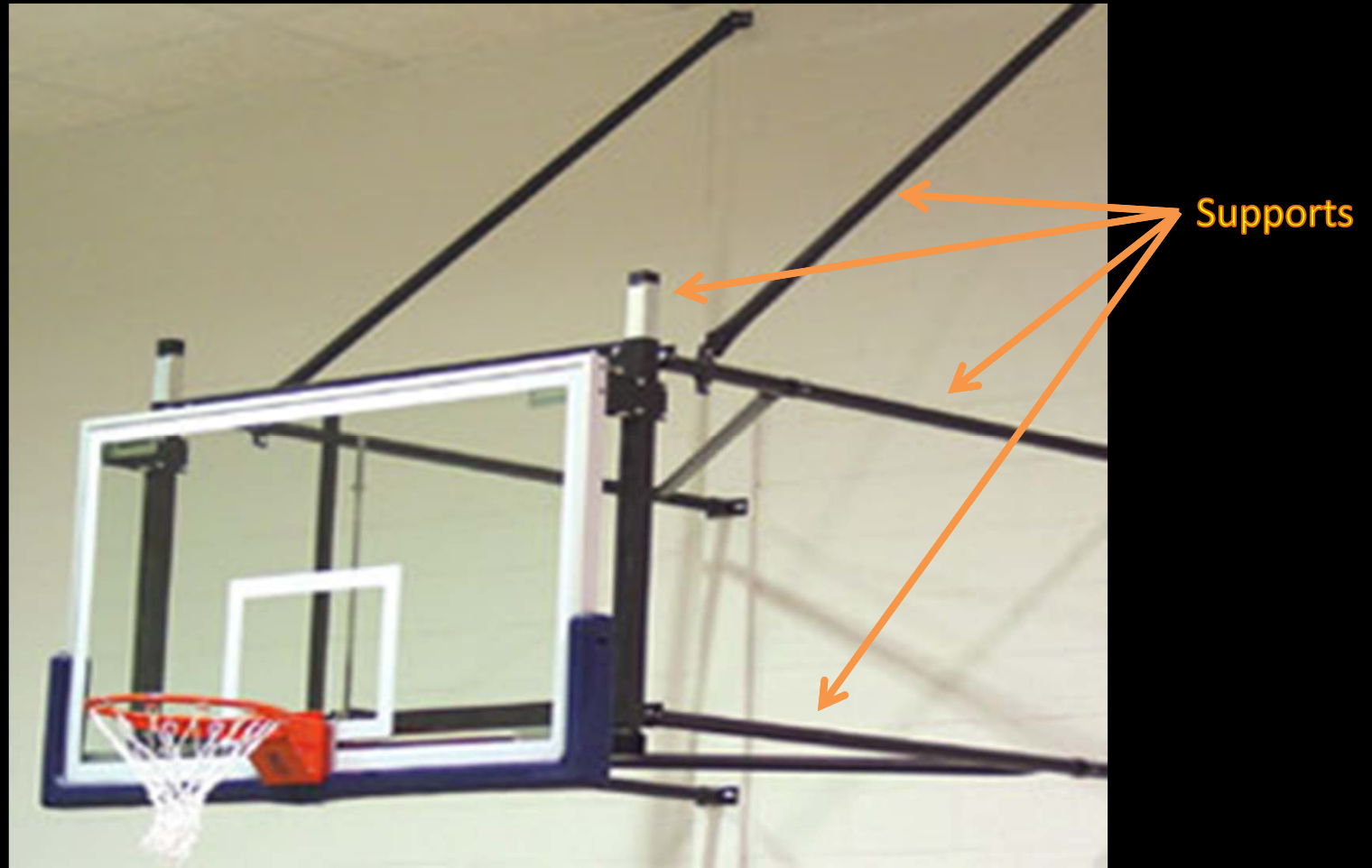
7-3 Simultaneous Out of Bounds

If the A.P. Arrow has not been established.

Play shall resume with a jump ball in the center restraining circle with the two players involved.



The ball is out of bounds when it is touched by:
The supports or back of the backboard



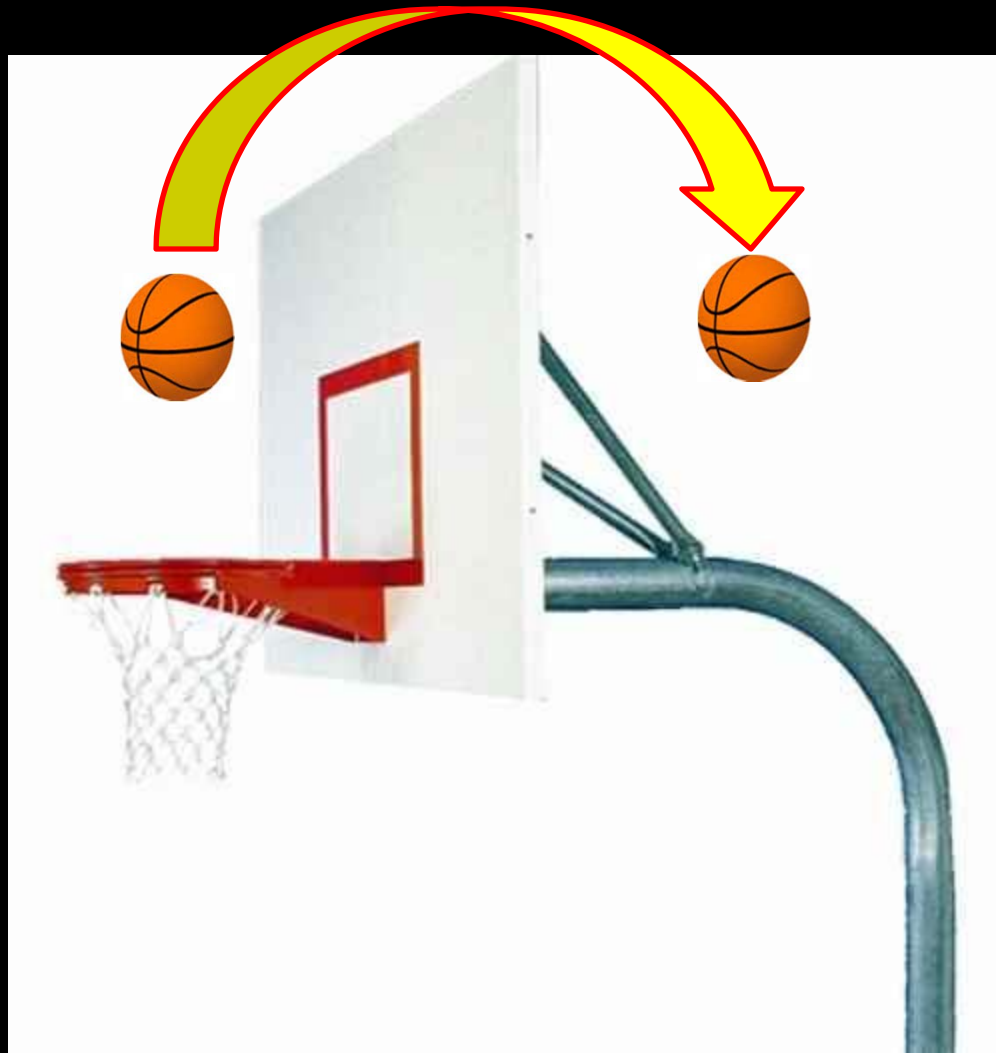
The ball is out of bounds when it is touched by:
back of the backboard



The ball is out of bounds when it is touched by:
the ceiling, overhead supports or equipment



The ball is out of bounds when it passes over a rectangular backboard.



THE BASKET

The backboards shall be the **same size** at **both ends** of the court.
The backboard shall be one of these two types.

Rectangular shaped backboard



Fan shaped backboard



The backboard must have padding that covers the bottom surface of the board and the side surface up to a distance of 15 inches.

Backboards shall be flat and unless transparent, it shall be white.



There shall be no logo, marking or lettering, etc. on backboard, backboard padding or basket

The basket ring shall have its upper edge
10 feet above and parallel to the floor.



Each basket shall consist of the metal ring.
It is 18 inches inside diameter.



The net shall be 15 to 18 inches in length.



THE BALL



Boys Basketball

Circumference=
29.5-30 in.

Weight= 20-22 oz.



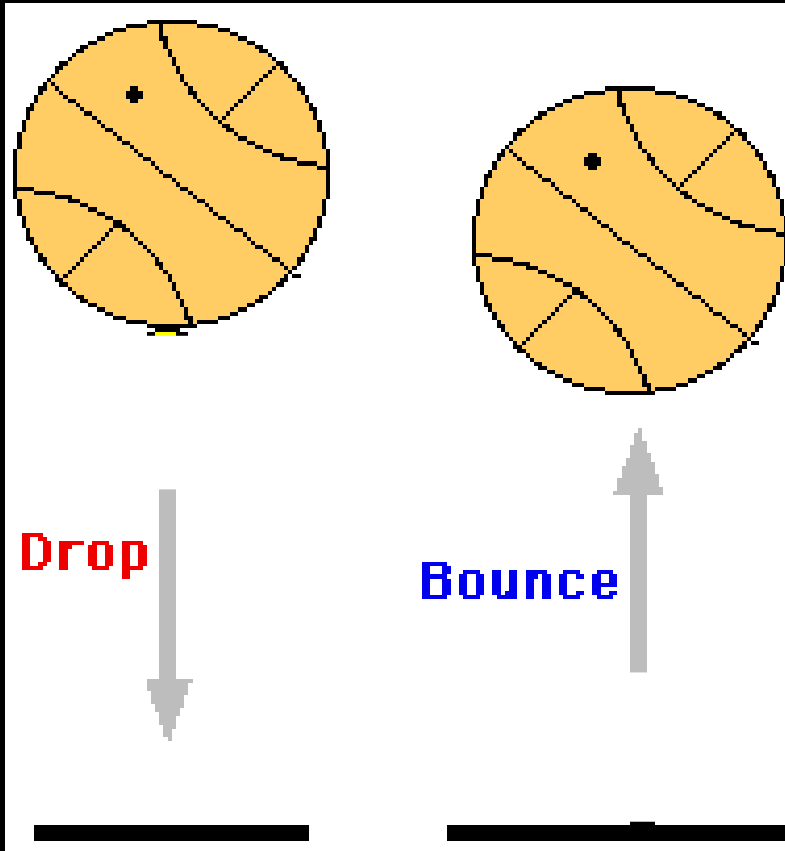
Girls Basketball

Circumference =
28.5-29in.

Weight = 18-20 oz.

The ball shall be inflated to an air pressure, when dropped from 6 feet, must bounce between 49-54 inches

6 feet



49 - 54 inches

BENCH AREA

1-13 Team Bench Locations

The location of each team's bench shall be designated by game management.

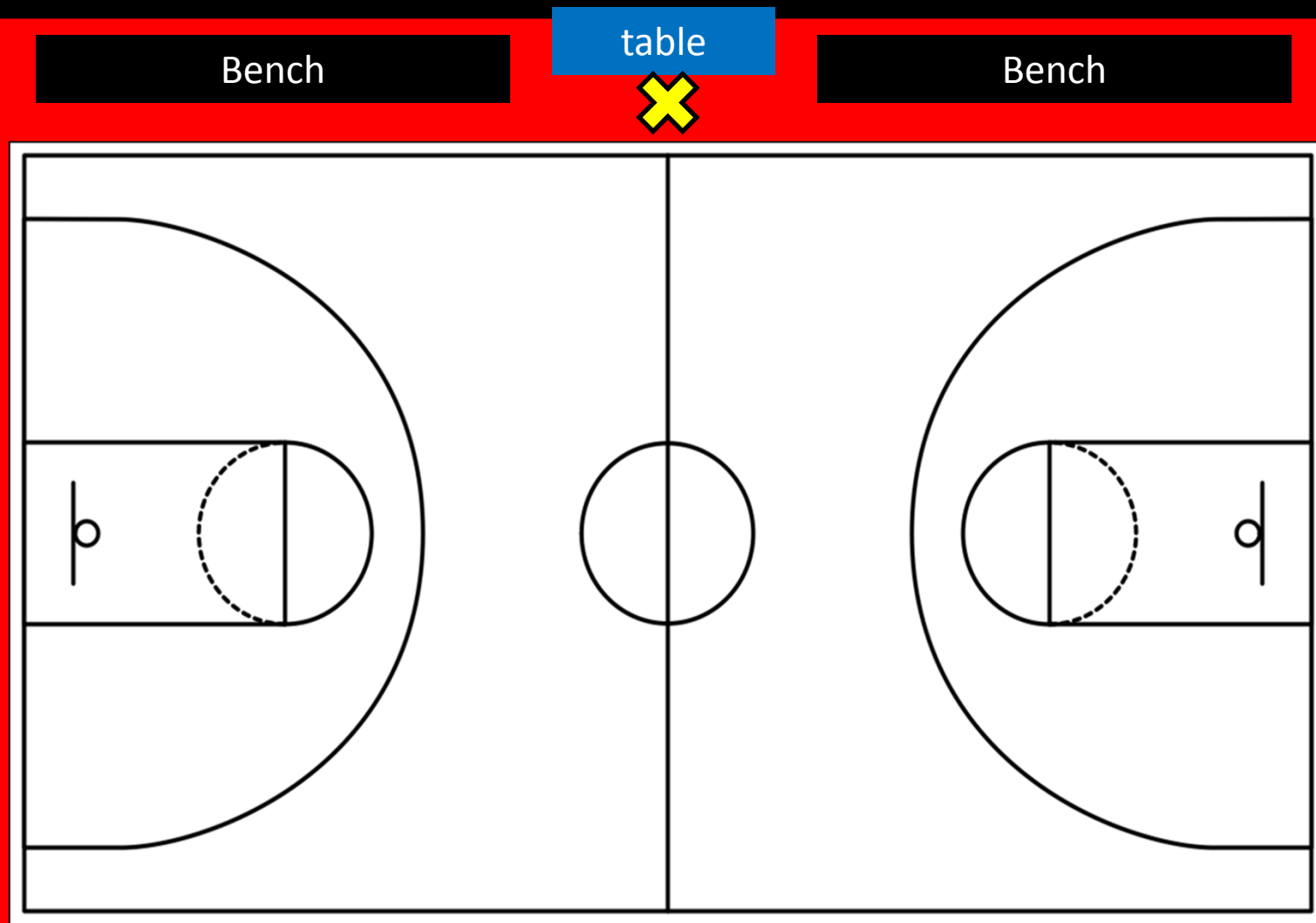


It is recommended that the benches for team members and coaches of both teams be placed along that side of the court on which the scorer's and timer's table is located.

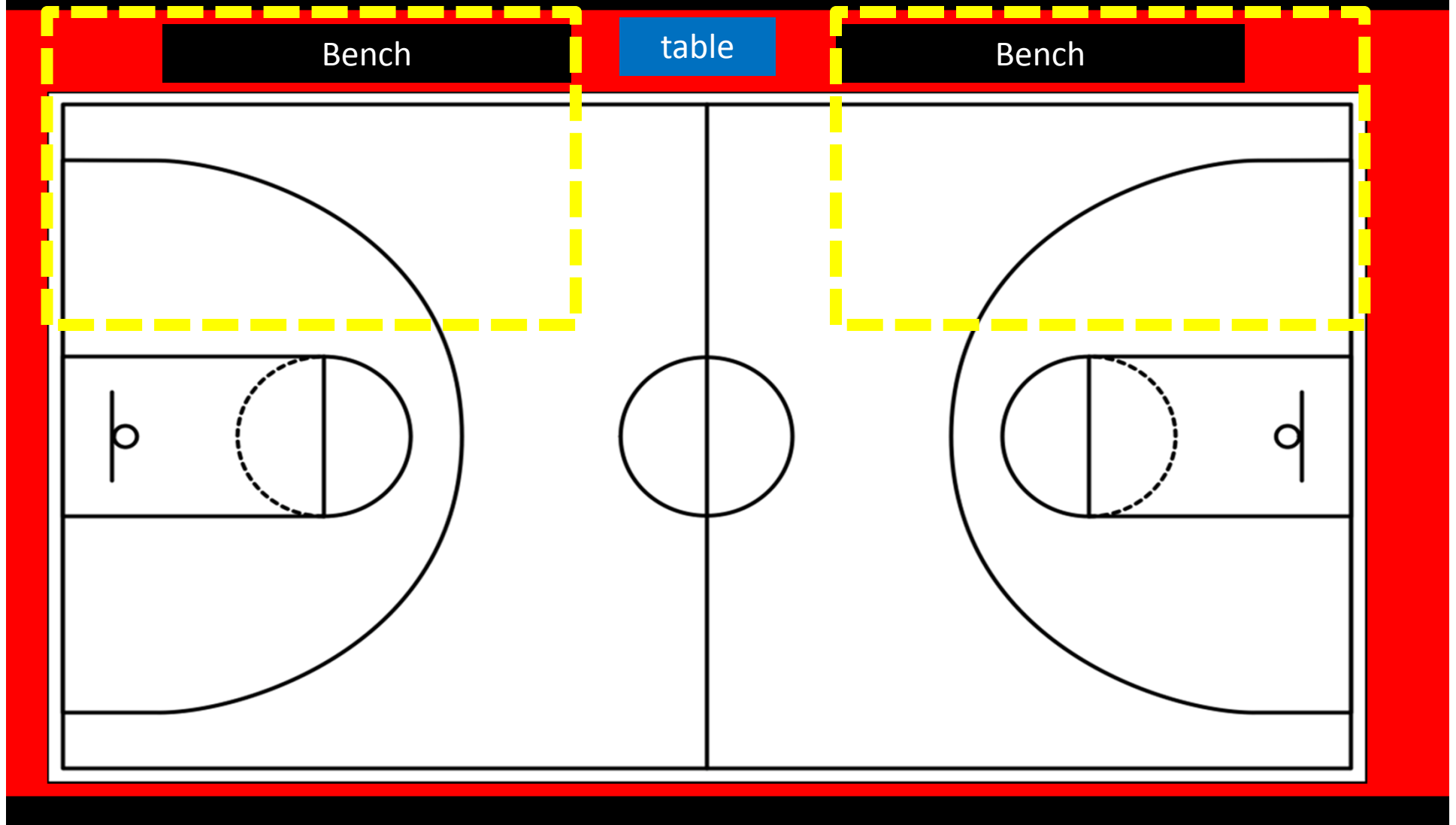
Coaching Box is 14 feet long and placed in the middle of the regulation 42 foot long half court



An “X” shall be placed
out of bounds in front of the scorers table
to help substitutes with proper location.



1-13 Time-out Area



SCORING & TIMING DEVICES

Red LED lights behind the
backboard
or
an audible timer's signal
shall indicate that time
has expired.



A visible game clock and scoreboard are mandatory.





An alternate timing device and scoring information system shall be available in the event of **malfunction**.

MUSIC / SOUND EFFECTS



The use of music/sound effects
can only be used during
pre-game, time outs, intermission and post game.

The use of artificial noise makers are **prohibited**.



THE END

